

SDoF

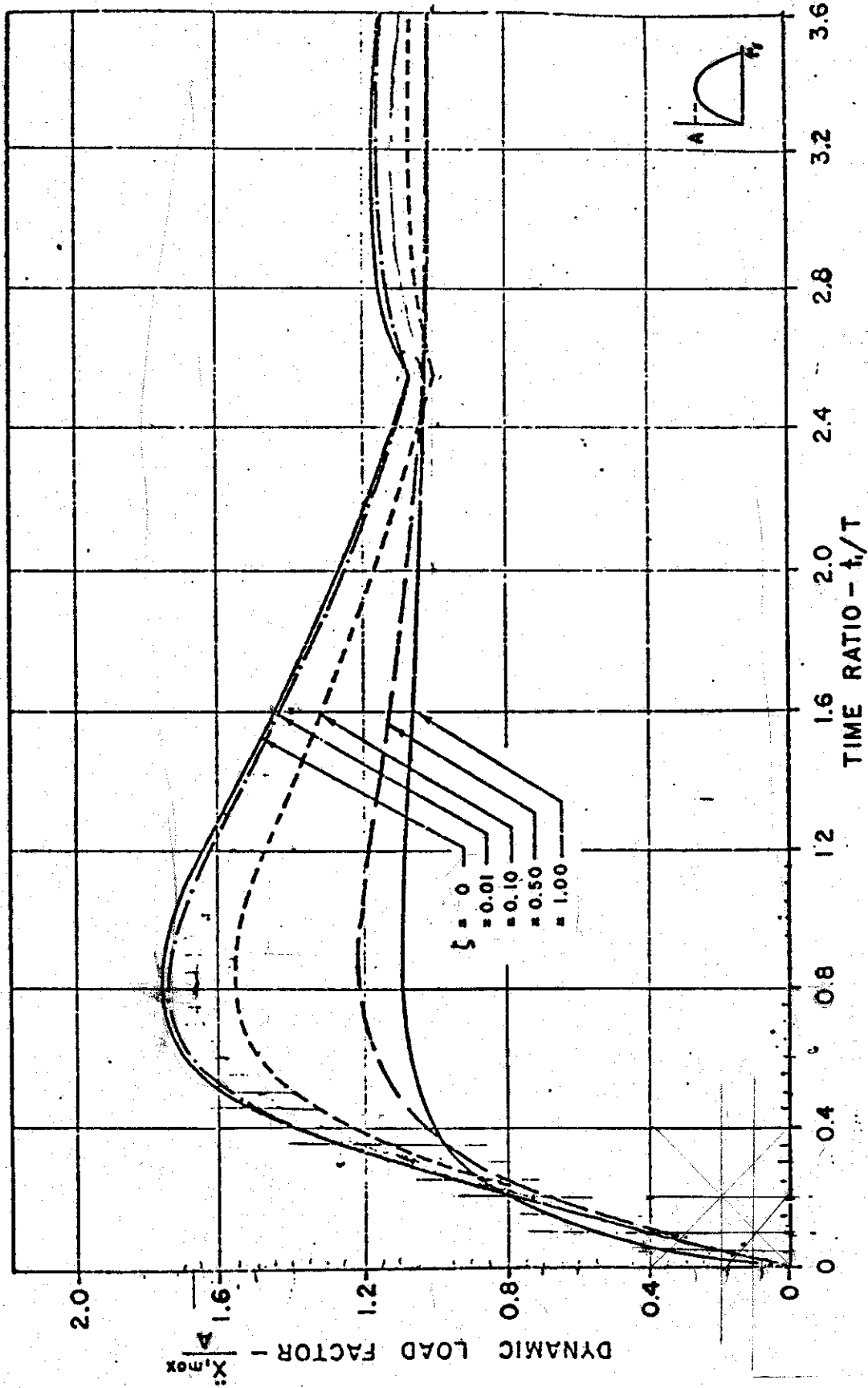


FIG. 14. ACCELERATION SHOCK SPECTRUM FOR HALF-SINUSOIDAL PULSE

$$\zeta = \frac{1}{2\zeta} \quad \tau = \frac{1}{f_n} \quad 2\pi f_n = \sqrt{\frac{k}{m}}$$

SDOF

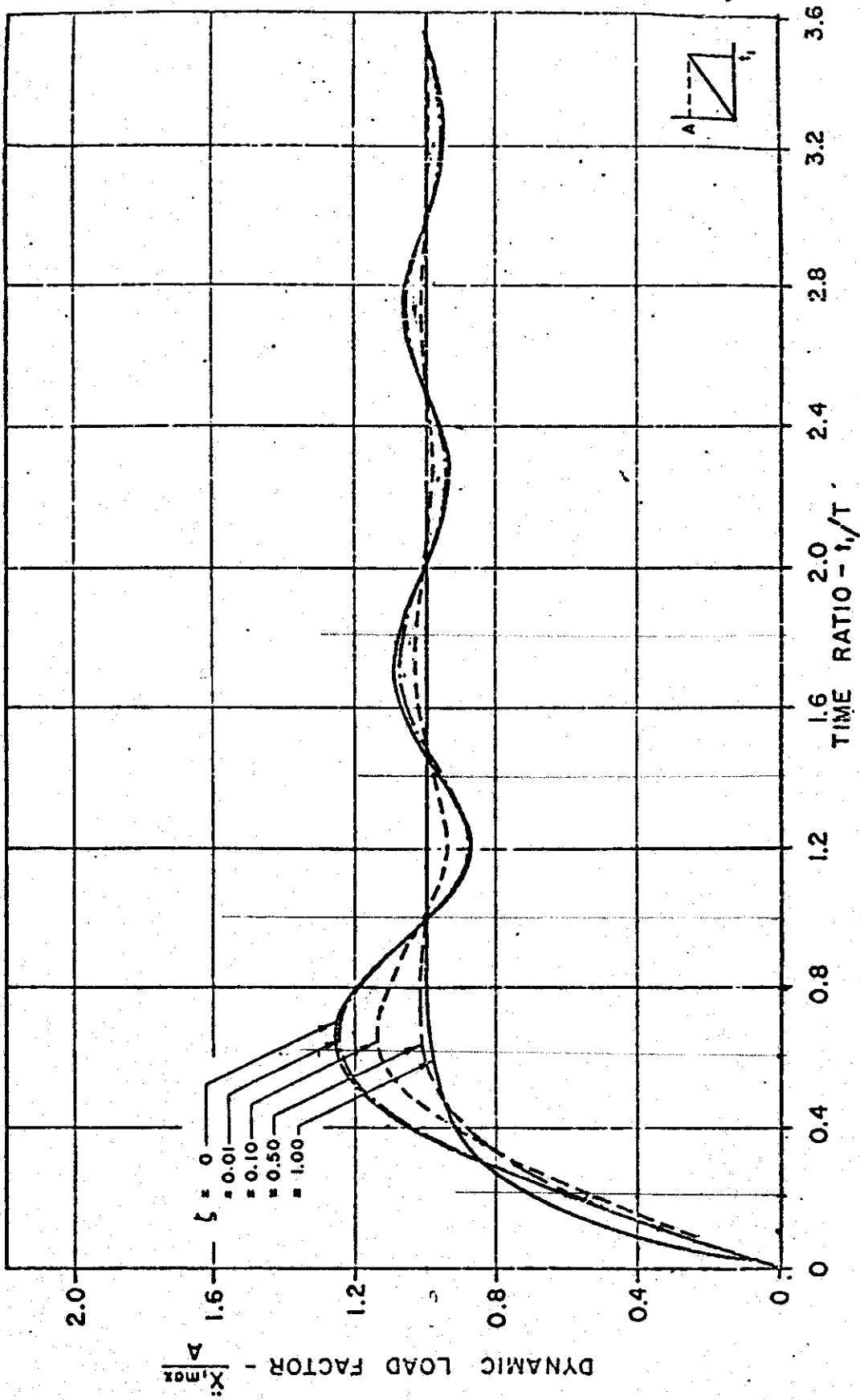


FIG. 12. ACCELERATION SHOCK SPECTRUM FOR TRIANGULAR PULSE III

SDOF

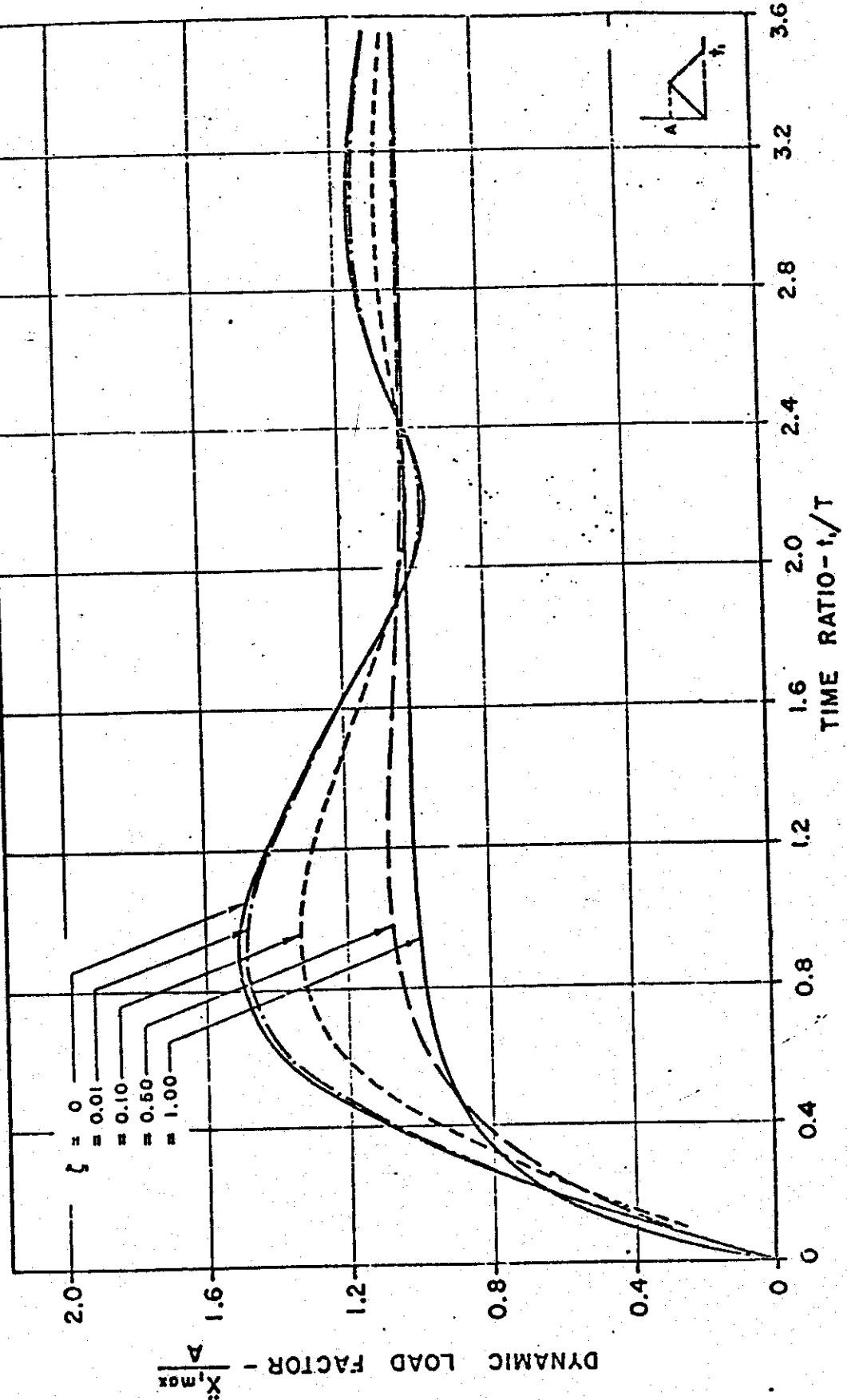


FIG 10 ACCELERATION SHOCK SPECTRUM FOR TRIANGULAR PULSE II

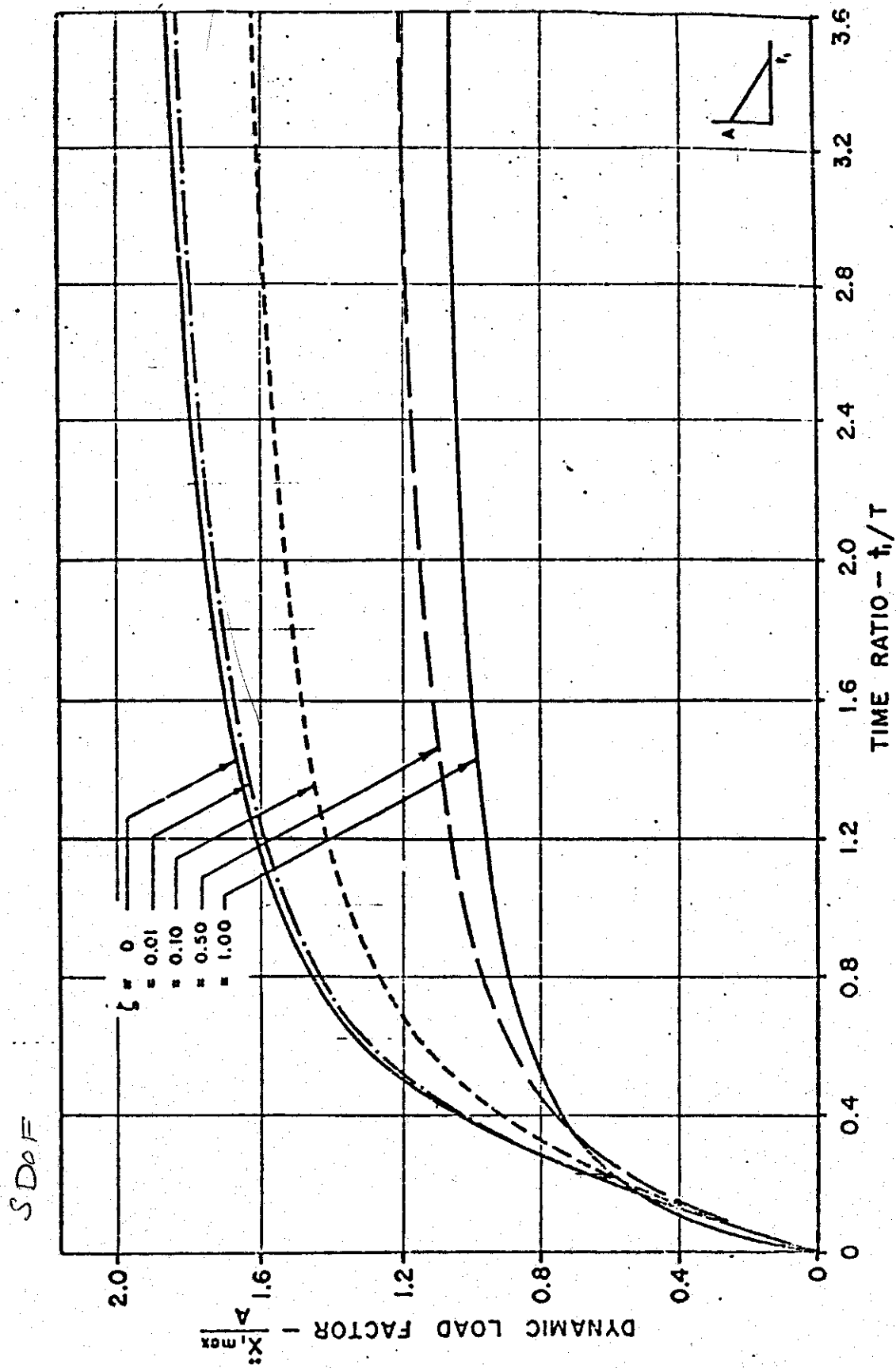
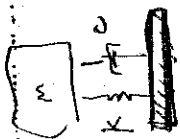


FIG. 8. ACCELERATION SHOCK SPECTRUM FOR TRIANGULAR PULSE I



SDOF

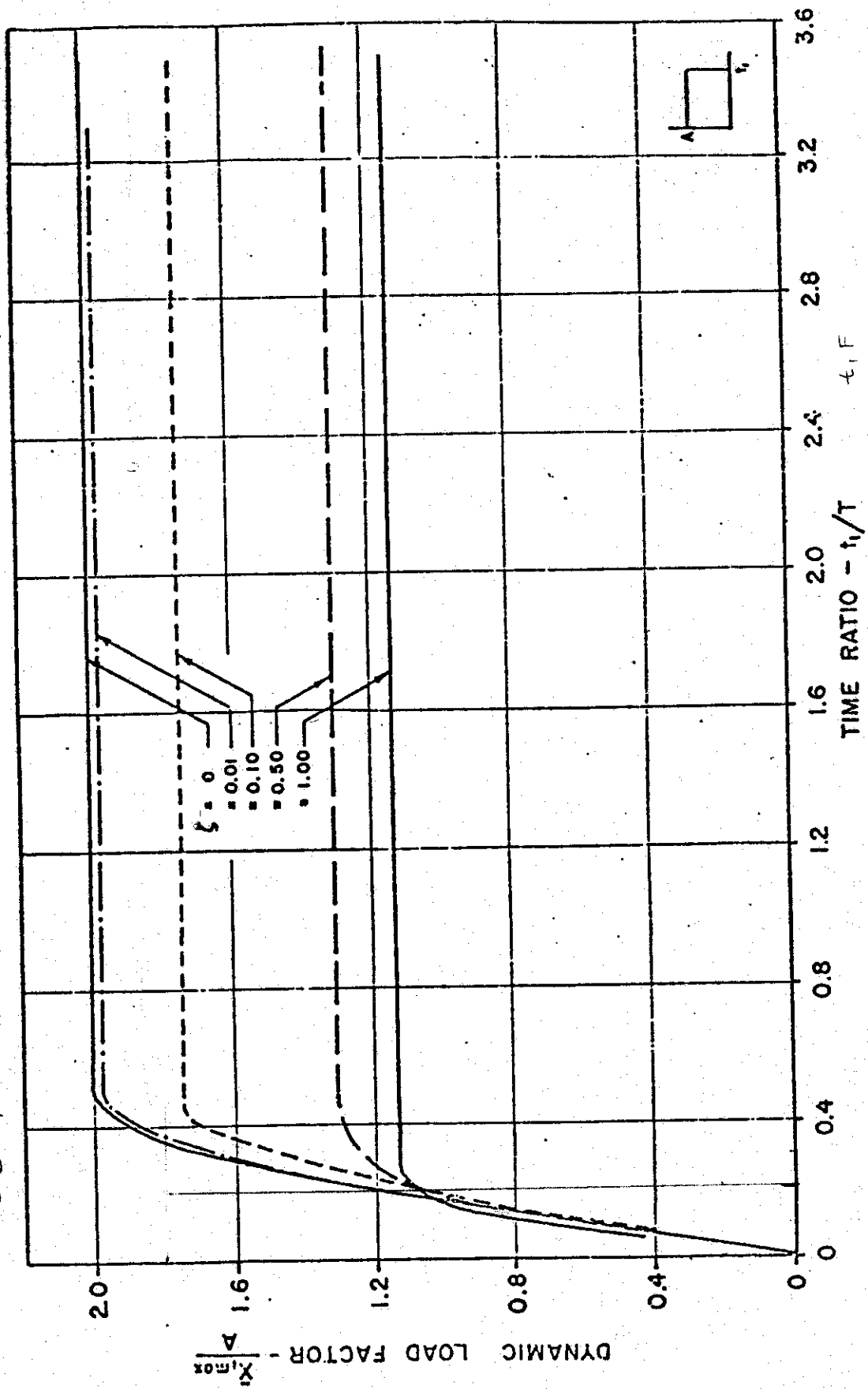


FIG. 6. ACCELERATION SHOCK SPECTRUM FOR RECTANGULAR PULSE